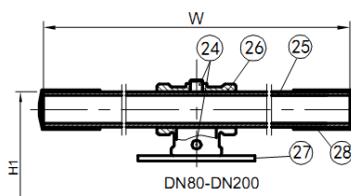
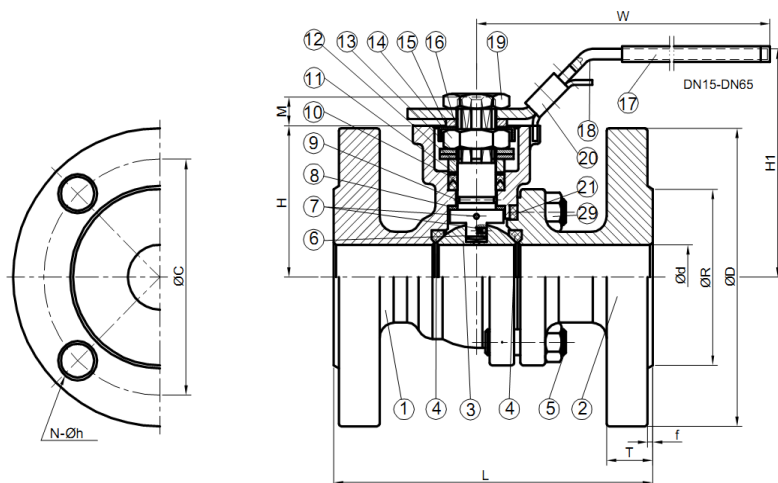




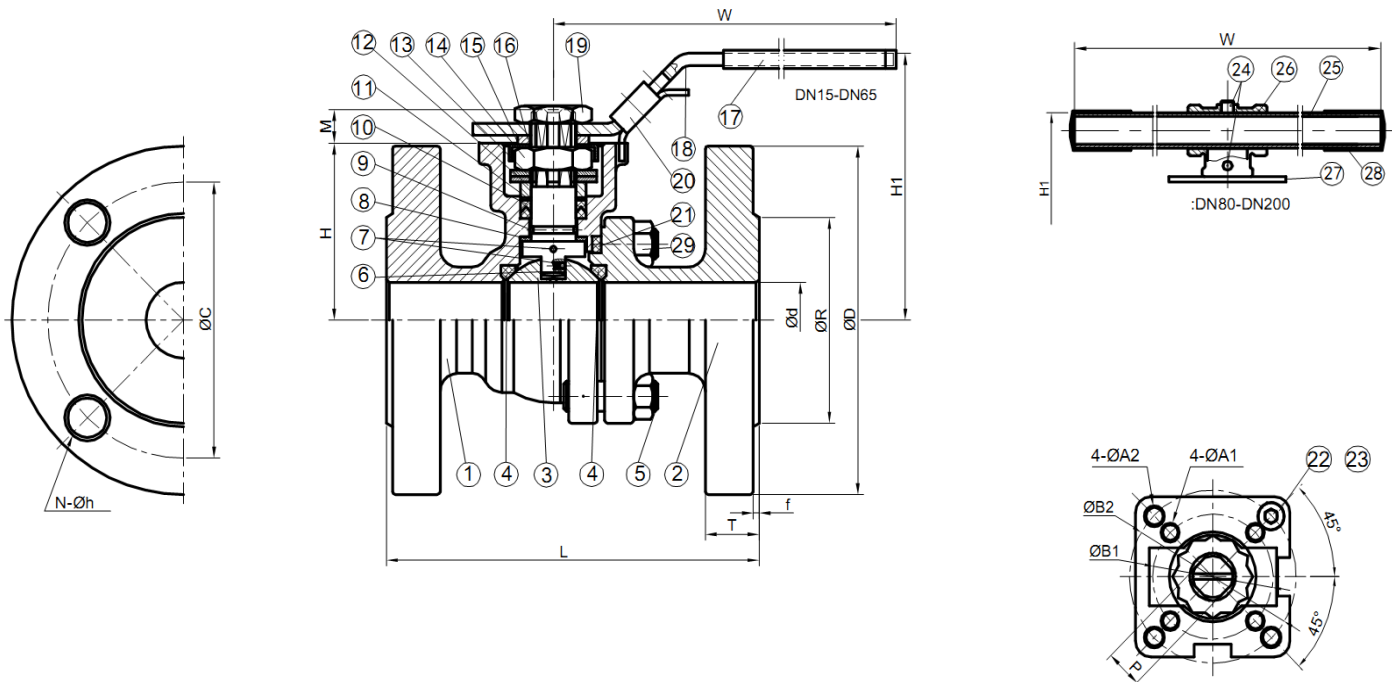
Nominal Pressure: ANSI Class 150
Face to face acc. to AMSE B16.10
Flanges acc. to ASME B16.5 RF
Body: Carbon Steel (A216-WCB)
Ball: Stainless Steel (A351-CF8)
Ball Seat: TFM 1600
Full Bore
Blow-out Proof Stem in Stainless Steel
Anti-Static Design
Operation: lockable Handlever,
optional with gearbox and handwheel

Certificates/Tests: FireSafe acc. to ISO10497-5

Nominal Diameter	Nominal Pressure	Article number
DN15	Class 150	KH-WAS2FL-1/2"-150
DN20	Class 150	KH-WAS2FL-3/4"-150
DN25	Class 150	KH-WAS2FL-1"-150
DN32	Class 150	KH-WAS2FL-1 1/4"-150
DN40	Class 150	KH-WAS2FL-1 1/2"-150
DN50	Class 150	KH-WAS2FL-2"-150
DN65	Class 150	KH-WAS2FL-2 1/2"-150
DN80	Class 150	KH-WAS2FL-3"-150
DN100	Class 150	KH-WAS2FL-4"-150
DN125	Class 150	KH-WAS2FL-5"-150
DN150	Class 150	KH-WAS2FL-6"-150
DN200	Class 150	KH-WAS2FL-8"-150



Material of Construction		
No.	Part Name	Material
		ANSI
1	Body	A216-WCB
2	End Cap	A216-WCB
3	Ball	A351-CF8
4	Ball Seat	TFM1600
5	Body screws	A193-B7
6	Stem	Stainless Steel 304
7	Anti-Static-Device	Stainless Steel 304
8	Thrust washer	PTFE
9	O-Ring	FKM
10	Stem packing	PTFE/Graphite
11	Bushing	50%SS+50%PTFE/304
12	Gland	Stainless Steel 316
13	Belleville washer	301
14	Stem Nut	A194-8
15	Rotation Lock	304
16	Spacer	A2-70
17	Handle sleeve	Vinyl-Plastic
18	Handle	Stainless Steel 304
19	Handle screw	A194-8
20	Locking Device	Stainless Steel 304
21	Body Gasket	316 Spiral+Graphite
22	90° Stop Bolt	A2-70
23	Schraubmutter	A194-8
24	Nut	Stainless Steel 304
25	extended handle	Steel A53 galvanised
26	Handle-Adapter	A351-CF8
27	Stop Plate	Stainless Steel 304
28	Handle sleeve	Vinyl-Plastic



Dimensions in mm																			
Nominal Diameter	Ød	Cl.150	ØR	Cl.150 ØD	Cl.150 ØC	f	Cl.150 T	Cl.150 N	Cl.150 Øh	H	H1	M	P	A1	A2	B1	Cl.150 B2	W	Kg
DN15	15	108	35,0	90,0	60,3	2	8,0	4	16,0	49	79	9	9	6	6	36	42	147	1,60
DN20	20	117	43,0	100,0	69,9	2	8,9	4	16,0	53	84	9	9	6	7	36	50	147	2,30
DN25	25	127	51,0	110,0	79,2	2	9,6	4	16,0	59	90	11	11	6	7	42	50	177	3,00
DN32	32	140	63,5	155,0	88,9	2	11,2	4	16,0	71	102	11	11	6	9	42	70	177	3,50
DN40	38	165	73,2	125,0	98,4	2	12,7	4	16,0	76	110	14	14	7	9	50	70	197	5,60
DN50	50	178	92,0	150,0	120,7	2	14,3	4	19,0	82	115	14	14	7	9	50	70	197	8,40
DN65	63	190	104,7	180,0	139,7	2	15,9	4	19,0	102	150	17	17	9	11	70	102	267	14,50
DN80	76	203	127,0	190,0	152,4	2	17,5	4	19,0	112	176	17	17	9	11	70	102	300	18,50
DN100	100	229	157,0	230,0	190,5	2	22,3	8	19,0	140	211	22	22		11		102	400	29,50
DN125	125	356	186,0	255,0	215,9	2	22,3	8	22,3	183	263	27	27	14		125		600	53,50
DN150	150	394	216,0	280,0	241,3	2	23,9	8	22,3	204	284	27	27	14		125		800	74,00
DN200	200	457	270,0	345,0	298,5	2	27,0	8	22,3	253	334	27	27	14	18	125	140	800	128,00