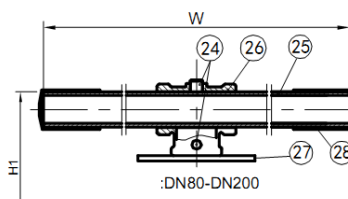
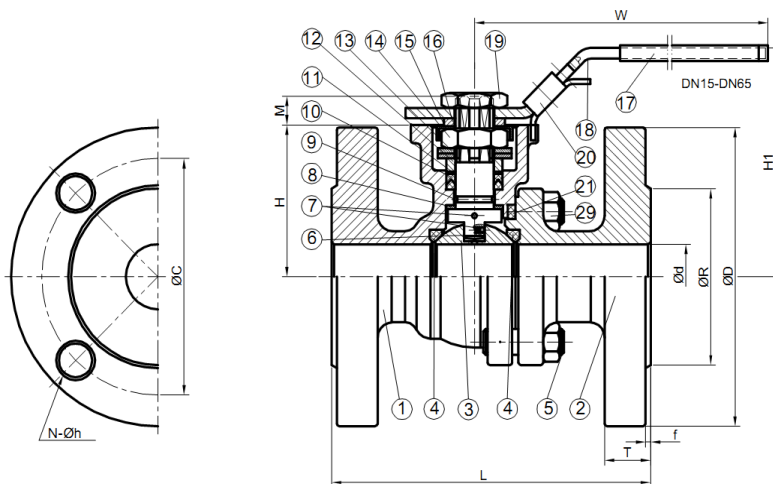




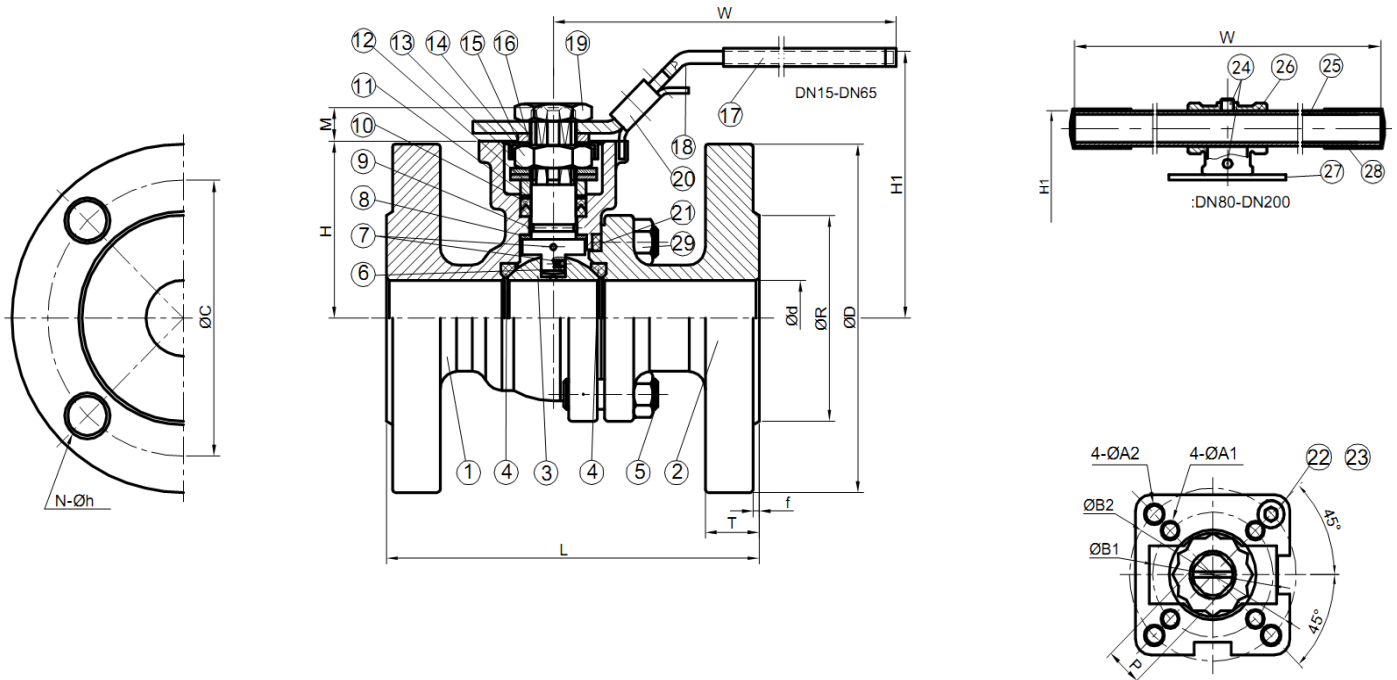
**Nominal Pressure: ANSI Class 300**  
**Face to face acc. to AMSE B16.10**  
**Flanges acc. to ASME B16.5 RF**  
**Body: Carbon Steel (A216-WCB)**  
**Ball: Stainless Steel (A351-CF8)**  
**Ball Seat: TFM 1600**  
**Full Bore**  
**Blow-out Proof Stem in Stainless Steel**  
**Anti-Static Design**  
**Operation: lockable Handlever,**  
**optional with gearbox and handwheel**

**Certificates/Tests: FireSafe acc. to ISO10497-5**

Nominal Diameter	Nominal Pressure	Article number
DN15	Class 300	KH-WAS2FL-1/2"-300
DN20	Class 300	KH-WAS2FL-3/4"-300
DN25	Class 300	KH-WAS2FL-1"-300
DN32	Class 300	KH-WAS2FL-1 1/4"-300
DN40	Class 300	KH-WAS2FL-1 1/2"-300
DN50	Class 300	KH-WAS2FL-2"-300
DN65	Class 300	KH-WAS2FL-2 1/2"-300
DN80	Class 300	KH-WAS2FL-3"-300
DN100	Class 300	KH-WAS2FL-4"-300
DN125	Class 300	KH-WAS2FL-5"-300
DN150	Class 300	KH-WAS2FL-6"-300
DN200	Class 300	KH-WAS2FL-8"-300



Material of Construction		
No.	Part Name	Material
		ANSI
1	Body	A216-WCB
2	End Cap	A216-WCB
3	Ball	A351-CF8
4	Ball Seat	TFM1600
5	Body screws	A193-B7
6	Stem	Stainless Steel 304
7	Anti-Static-Device	Stainless Steel 304
8	Thrust washer	PTFE
9	O-Ring	FKM
10	Stem packing	PTFE/Graphite
11	Bushing	50%SS+50%PTFE/304
12	Gland	Stainless Steel 316
13	Belleville washer	301
14	Stem Nut	A194-8
15	Rotation Lock	304
16	Spacer	A2-70
17	Handle sleeve	Vinyl-Plastic
18	Handle	Stainless Steel 304
19	Handle screw	A194-8
20	Locking Device	Stainless Steel 304
21	Body Gasket	316 Spiral+Graphite
22	90° Stop Bolt	A2-70
23	Schraubmutter	A194-8
24	Nut	Stainless Steel 304
25	extended handle	Steel A53 galvanised
26	Handle-Adapter	A351-CF8
27	Stop Plate	Stainless Steel 304
28	Handle sleeve	Vinyl-Plastic



Dimensions in mm																			
Nominal Diameter	Ød	Cl.300	ØR	Cl.300 ØD	Cl.300 ØC	f	Cl.300 T	Cl.300 N	Cl.300 Øh	H	H1	M	P	A1	A2	B1	Cl.300 B2	W	Kg
DN15	15	140	35,0	95,0	66,7	2	12,7	4	16,0	49	79	9	9	6	6	36	42	147	2,54
DN20	20	152	43,0	115,0	82,6	2	14,3	4	19,0	59	89	9	9	6	6	36	42	147	3,64
DN25	25	165	51,0	125,0	88,9	2	15,9	4	19,0	64	95	11	11	6	7	42	50	177	4,55
DN32	32	178	63,5	135,0	98,4	2	17,5	4	19,0	71	102	11	11	6	7	42	50	177	5,17
DN40	38	190	73,2	155,0	114,3	2	19,1	4	22,3	80	113	14	14	7	9	50	70	197	8,69
DN50	50	216	92,0	165,0	127,0	2	20,7	8	19,0	85	118	14	14	7	9	50	70	197	10,90
DN65	63,5	241	104,7	190,0	149,2	2	23,9	8	22,3	102	150	17	17	9	11	70	102	267	17,50
DN80	76	282	127,0	210,0	168,3	2	27,0	8	22,3	112	176	17	17	9	11	70	102	300	27,30
DN100	100	305	157,0	255,0	200,0	2	30,2	8	22,3	140	211	22	22		11		102	400	41,80
DN125	125	381	186,0	280,0	235,0	2	33,4	8	22,3	183	263	27	27	14		125		600	67,60
DN150	150	403	216,0	320,0	269,9	2	35,0	12	22,3	204	284	27	27	14		125		800	100,60
DN200	200	502	270,0	380,0	330,2	2	39,7	12	25,4	253	334	27	27	14	18	125	140	800	144,30